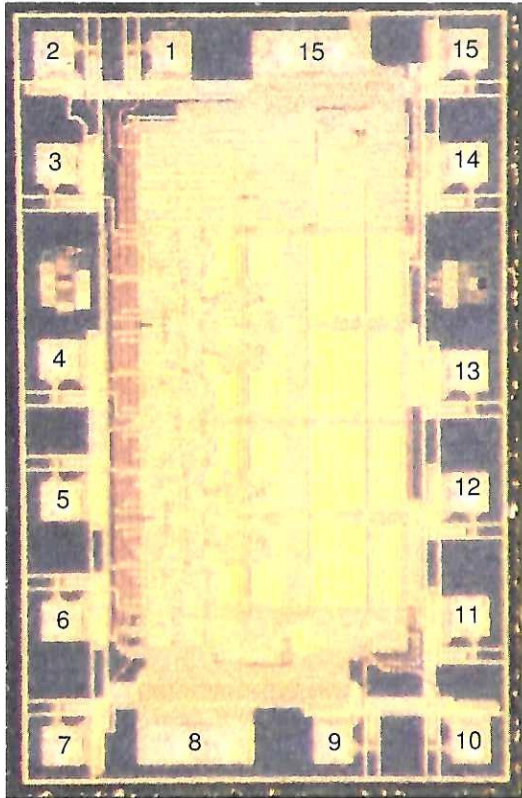




# Sierra Components, Inc.

2222 Park Place, 3-E • Minden, Nevada 89423

Phone: 775.783.4940 Fax: 775.783.4947



PAD	FUNCTION
1	N. MR
2	CP
3	D0
4	D1
5	D2
6	D3
7	PE
8	GND
9	N. SPE
10	TE
11	Q3
12	Q2
13	Q1
14	Q0
15	TC
16	V <sub>CC</sub>

**NOTE**

- This data is supplied for general information only and is believed to be correct at the time of publication.
- For critical applications, the customer is advised to verify device revision and pad coordinates, prior to processing
- Changes can be made without notification from the manufacturer. I

DEVICE	54HCT161	DIE SIZE (MILS)	55 X 85
MANUFACTURER	ZYTREX	BOND PADS MIN (MILS)	4 X 4
APPROVED BY	GEW	TOP METAL	Al
DATE	25/01/21	BACK METAL	Si
SERIAL NUMBER	0910	BACK POTENTIAL	FLOAT

**APPROVED BY: MG**

**DIE SIZE: 55 x 85 Mils**

**DATE: 3/26/21**

**MFG: Zytrex**

**THICKNESS:**

**P/N: 54HCT161**